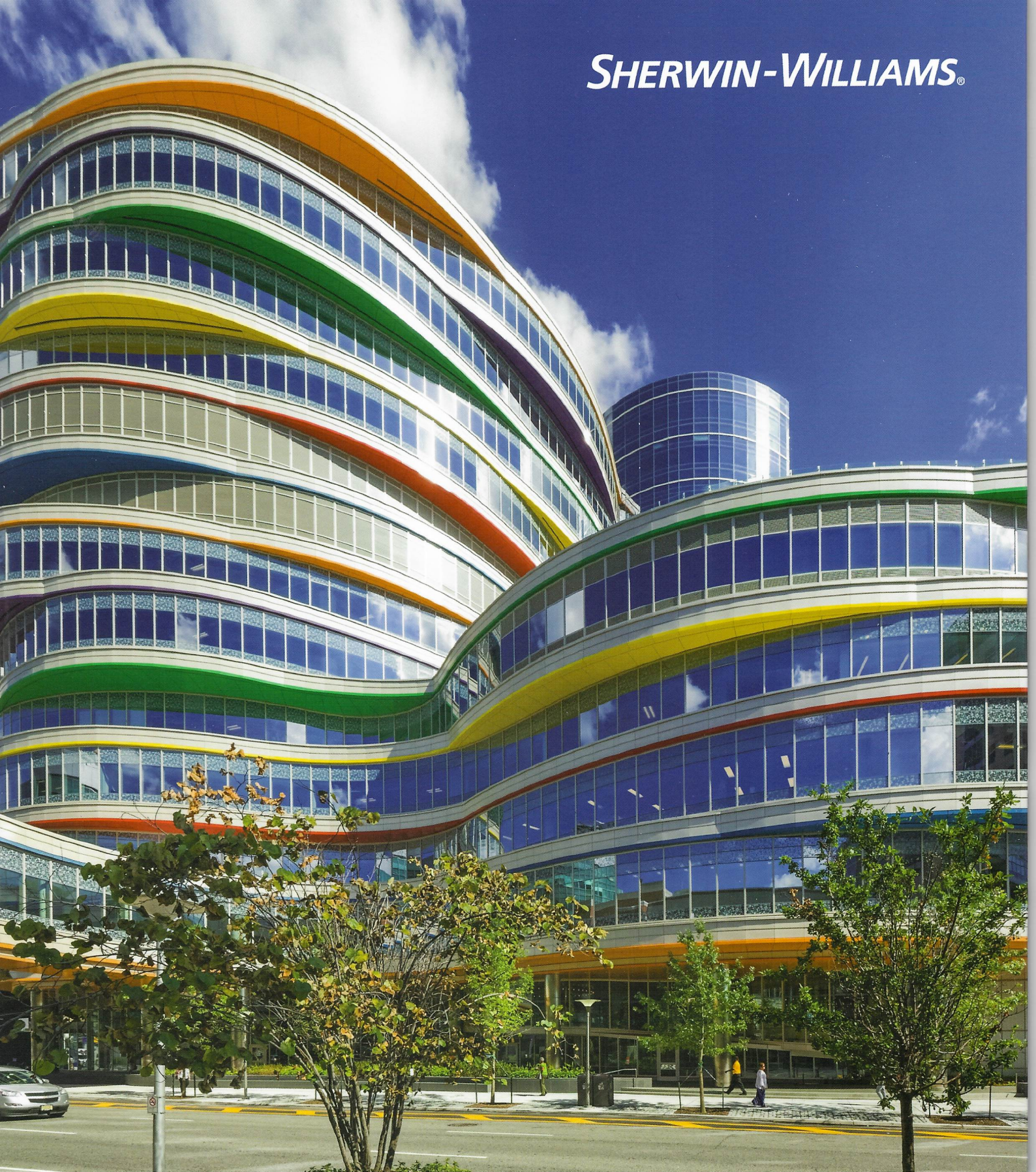


SHERWIN-WILLIAMS[®]



Vision 2020

syntha pulvin

ARCHITECTURAL
COATING
SOLUTIONS



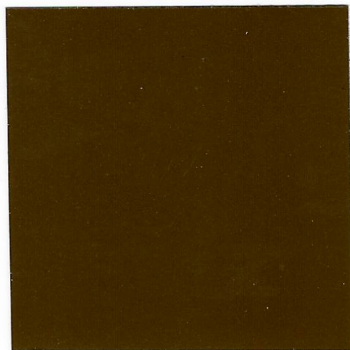
Photo Credit: J. Urquijo

Future Lux

Daring, experimental colors that mimic the transitional nature of our digital world.



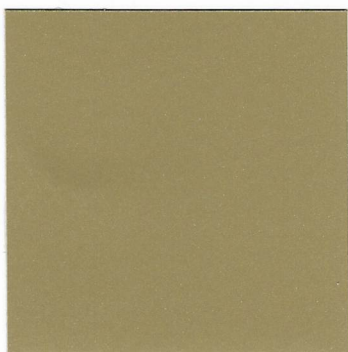
BLUE KARIBA
41129



DARK BRASS
65646



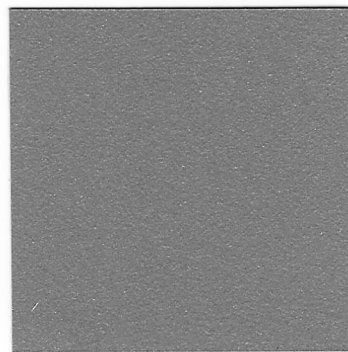
GREY KHORGO
62366



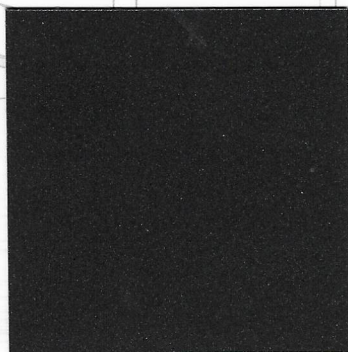
GOLD WATCH
34156



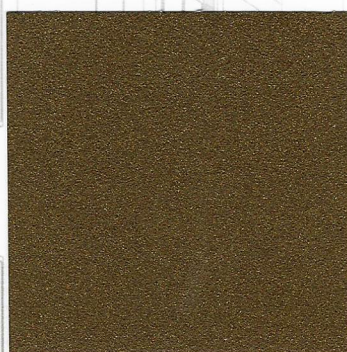
BRONZE BAGANA
41152



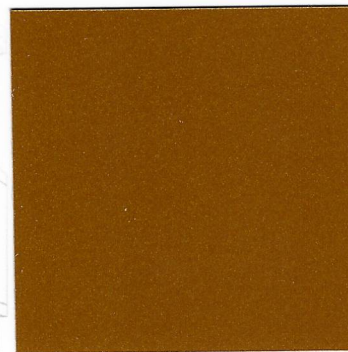
GREY PAKA
88774



GREY TULARE
50316



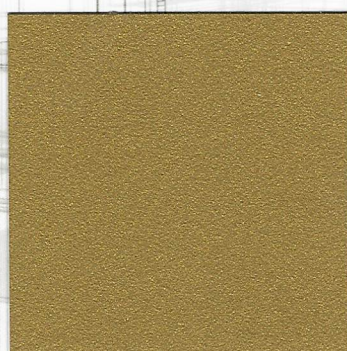
ANCIENT BRASS
65656



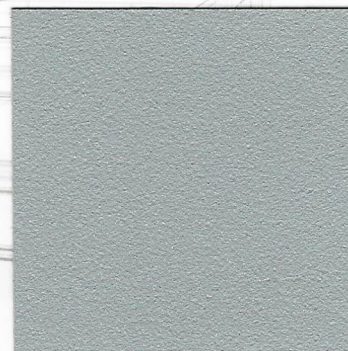
BRONZE MALAWI
40979



BLACK LAVA
93696



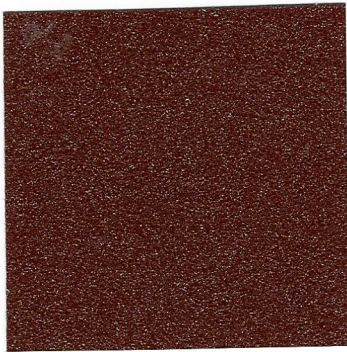
GOLD KARKAR
41113



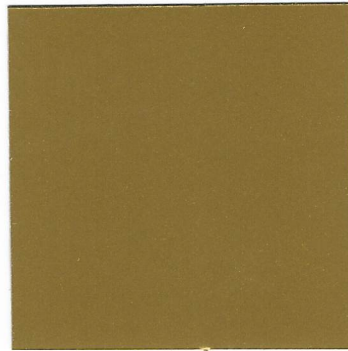
GREY STROMBOLI
40962

Hit Pause

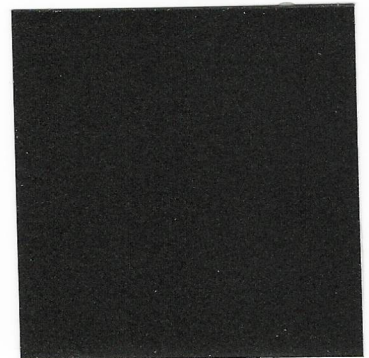
Rich tones in healing colors that help us slow down, recharge and realign mind, body and soul.



RED EREBUS
40983



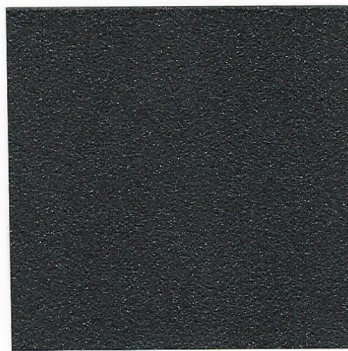
GOLD GURI
41199



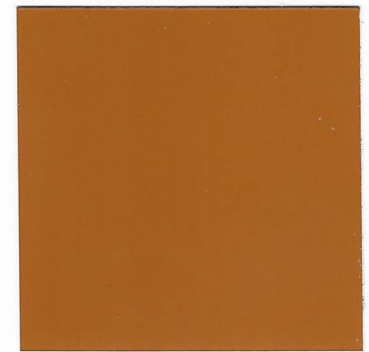
BROWN APANA
83766



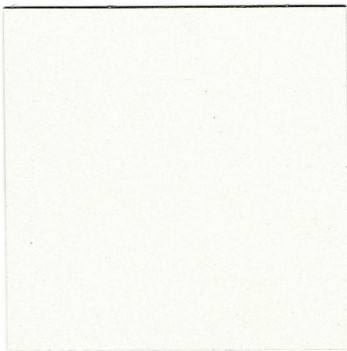
GREEN TITICACA
41123



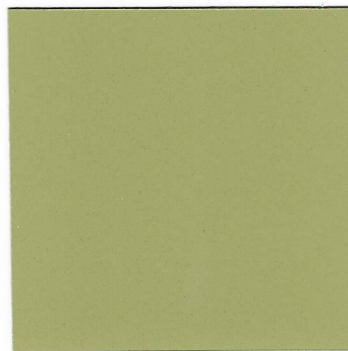
BLUE TELICA
30856



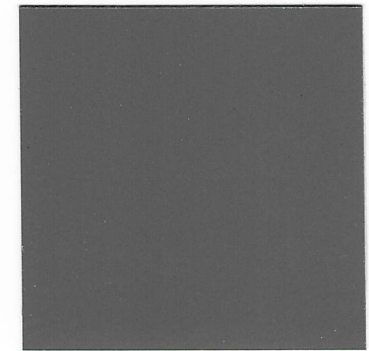
ORANGE GINGER
36849



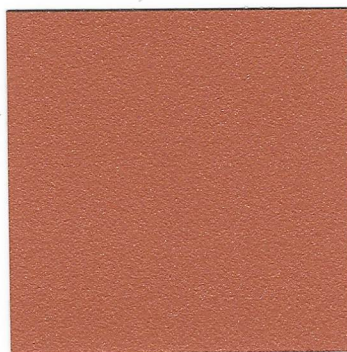
WHITE OMEGA
30884



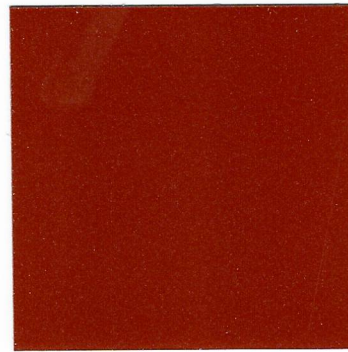
GREEN MANITOBA
41017



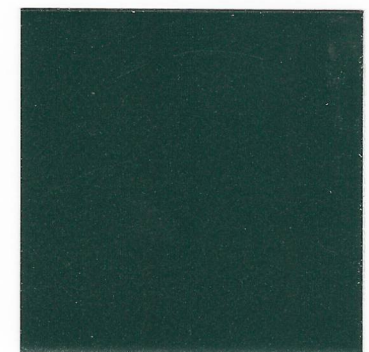
COOL ZACTIQUE
37101



RED SIRUNG
40958



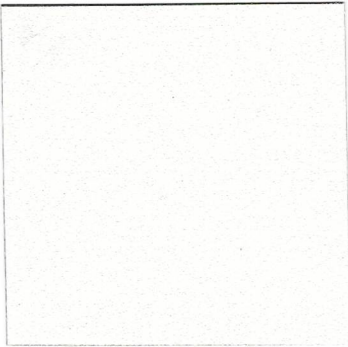
RED MANAGUA
41169



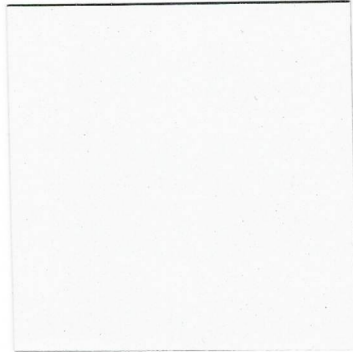
GREEN VICTORIA
41149

Median

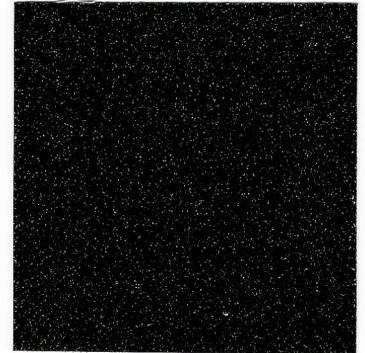
Conscious and conventional meets our modern world of endless options with colors that are practical while still making a statement.



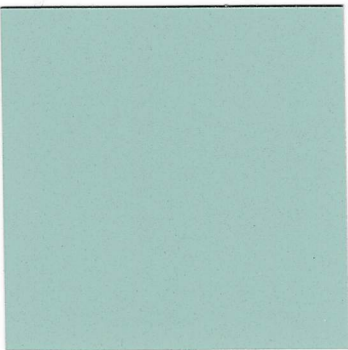
WHITE IRAZU
40943



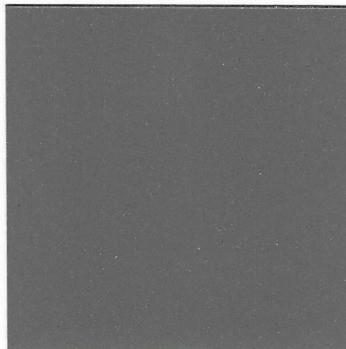
WHITE MELO
41159



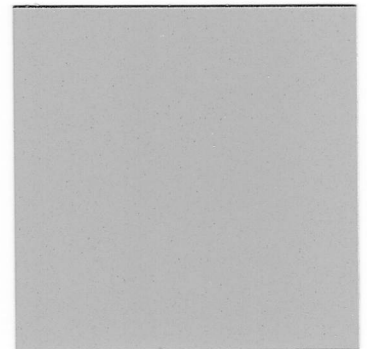
BLACK ABAYA
40953



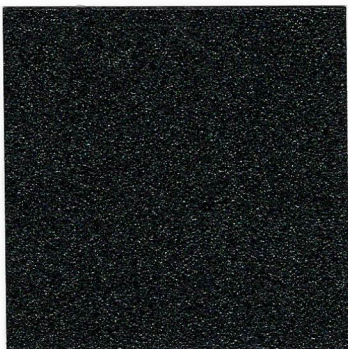
BLUE HURON
41128



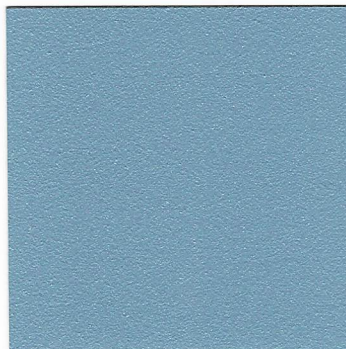
GREY YOJOA
38194



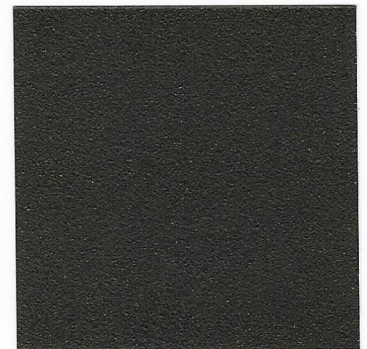
SILVER POTOSI
55646



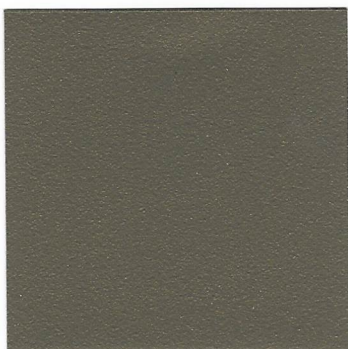
BLACK NOCTIS
65636



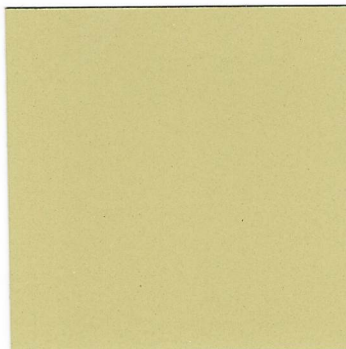
BLUE SOTARA
41139



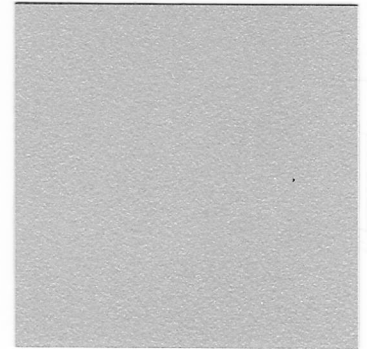
DARK BRONZE
88634



LIGHT BRONZE
88674



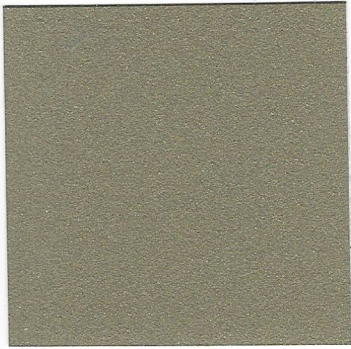
BEIGE CERESIO
40949



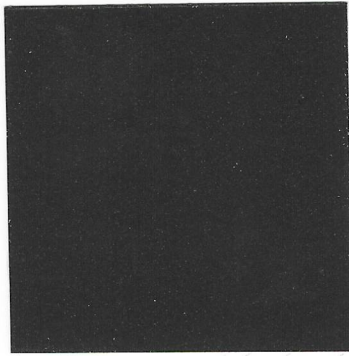
SILVER BOMBALAI
35795

Sustain React

Strong, reactive colors that depict our environment as we leverage technology to fight for our future.



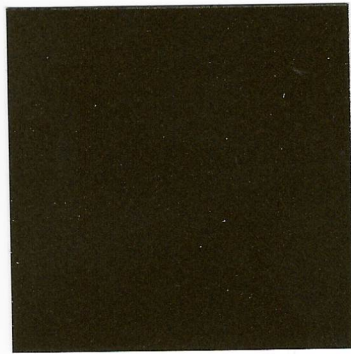
BEIGE FUTUNA
35545



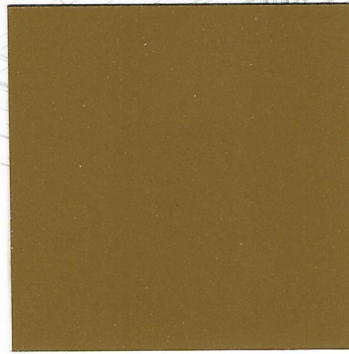
GREY PEWTER
41469



BRONZE GLENCOE
35565



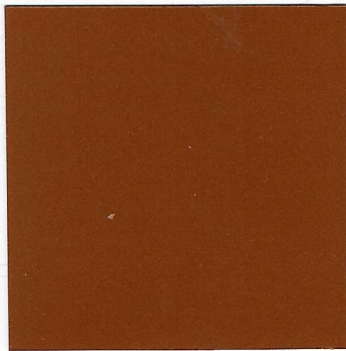
BRONZE VANDA
40999



GOLD MOERO
41189



GREEN PAGAN
40972



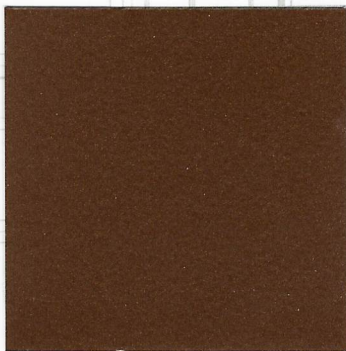
COPPER KIVU
37107



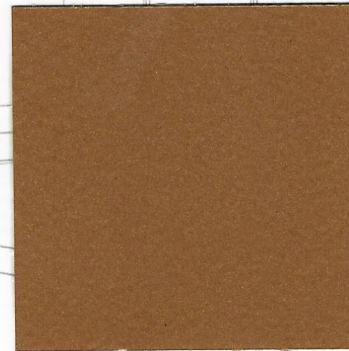
BROWN NEBO
35825



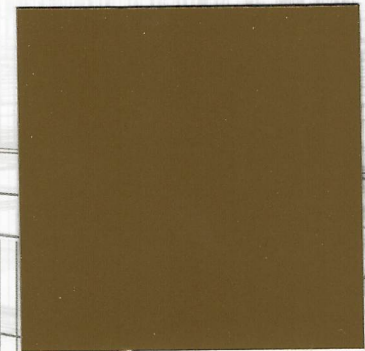
RUST RAME
36136



HAZELNUT MICA
37018



BRONZE LARIO
40981



BRONZE SUWA
40969

Vision 2020

Vision 2020 Color Card

All Syntha Pulvin powder coatings fully comply with the criteria and standards set by the Quality Associations:

GSB: Master

Qualicoat: Class 2

Color samples shown in this card are merely indicative in terms of color, finish and gloss as for technical reasons results may vary slightly on account of the individual production process.

This document is not contractually binding.

Vision 2020 Carta de colores

Todos los recubrimientos en polvo Syntha Pulvin respetan rigurosamente las especificaciones y los estándares de calidad establecidos por las Marcas de Calidad:

GSB: Master

Qualicoat : Clase 2.

Las muestras de los colores representados en este catálogo son meramente indicativos. El aspecto y brillo pueden sufrir ligeras variaciones con el tiempo. Asimismo los resultados pueden variar según el proceso de aplicación particular.

El presente documento no es válido ni vinculante a fines contractuales.

Vision 2020 Cartella colori

Tutte le vernici in polvere Syntha Pulvin rispettano rigorosamente le specifiche e gli standard qualitativi stabiliti dalle Associazioni di Qualità:

GSB: Master

Qualicoat: Classe 2

La rappresentazione della tinta, aspetto e brillantezza, potendo subire variazioni nel tempo, è puramente indicativa. Leggere variazioni possono verificarsi a seconda dei singoli processi applicativi.

Il presente documento non è valido o vincolante a fini contrattuali.

Vision 2020 Χρωματολόγιο

Όλες οι πούδρες Syntha Pulvin πληρούν τις προδιαγραφές των οργανισμών πιστοποίησης:

GSB: Master

Qualicoat: Class 2

Για τεχνικούς λόγους, τα δοκίμια του παρόντος καταλόγου μπορεί να έχουν μια ελαφρά απόκλιση από την πραγματική βαφή σε βιομηχανική κλίμακα.

Αυτό το έγγραφο δεν έχει συμβατική ισχύ.

Vision 2020 Nuancier

Tous les revêtements Syntha Pulvin à base de peintures en poudre respectent pleinement les critères et les normes établies par les organismes de certifications suivants:

GSB : Master

Qualicoat : Classe 2

Les échantillons de couleur reproduits dans ce nuancier le sont uniquement à titre indicatif. Le rendu et la brillance peuvent varier légèrement au fil du temps selon les procédés d'applications individuels.

Ce document n'a aucune valeur contractuelle.

Vision 2020 Карта цветов

Все порошковые покрытия компании Syntha Pulvin полностью соответствуют критериям и стандартам следующих организаций:

GSB: Master

Qualicoat: Класс 2

Образцы цвета, приведенные в этом каталоге имеют оценочный характер с точки зрения цвета, структуры и блеска покрытий, так как полу чаемые в производственных условиях покрытия незначительно отличаются в связи с индивидуальными особенностями конкретного производства.

Этот документ не является обязательным для исполнения.

Vision 2020 Farbkarte

Die vorgestellten Syntha Pulvin Pulverbeschichtungen erfüllen die Anforderungsprofile der Qualitätsgemeinschaften:

GSB: Master

Qualicoat: Class 2

Die Farbmuster sind hinsichtlich Farbe, Effekt und Glanz nicht verbindlich. Bei Fertigung dieser Farben sind geringe Abweichungen nicht auszuschließen.

Das Dokument ist nicht rechtsverbindlich.

Vision 2020 Karta Kolorów

Wszystkie farby proszkowe Syntha Pulvin w pełni spełniają kryteria i standardy Stowarzyszeń Kontroli Jakości:

GSB: Master

Qualicoat: Klasa 2

Próbki farb ukazane w tym katalogu są orientacyjne pod względem odcienia, wykończenia i stopnia połysku, ponieważ w procesie technicznym mogą pojawić się delikatne odchylenia spowodowane indywidualizowanym procesem produkcyjnym.

Niniejszy dokument nie stanowi prawnie wiążącej umowy.

Contact Us

Finland

Helsinki, Finland
+358 10 218 3600

France

Thouars, France
+33 (0) 5 49 96 05 00

Germany

Essenbach-Altheim, Germany
+49 (0) 8703 906 583

Greece

Athens, Greece
+30 210 610 9930-4

Ireland

Dublin, Ireland
+00353 1401 9304

Italy

Bologna, Italy
+39 051 638 0411

Poland

Debica, Poland
+48 14 658 4100

Romania

Bucharest, Romania
+40 724 275 636

Russia

Moscow, Russia
+7 495 777 2324

Serbia

Belgrade, Serbia
+381 11 404 0507

South Africa

Durban, South Africa
+27 31 459 8400

Spain

Barcelona, Spain
+34 (0) 93 884 3442

Switzerland

Bubikon, Switzerland
+41 55 253 15 15

United Kingdom

Liverpool, United Kingdom
+44 (0) 151 486 0486

United States

Minneapolis, Minnesota, USA
+1 (612) 851-7000

www.synthapulvin.co.uk

For more than 150 years Sherwin-Williams has been a leader in the art and science of coatings that excel in both beauty and function. The color Vision 2020 represents a major breakthrough in powder coating technology focused on eco-friendly products designed for the architectural market. Vision 2020 puts our cumulative knowledge of architectural color trends at your availability. Sherwin-Williams has developed the Vision 2020 with the scope to convey emotion, define global cultures, awaken the spirit, stir the soul, embellish desires and finally help all of us to evolve into the realm of color.